

**TVS**  
**EUROGRIP**  
OFF HIGHWAY TYRES



**TIGERTRAC AR 4005** **MaX-FleX**  
**PREMIUM VF TRACTOR RADIALS**

# Tigertrac AR 4005

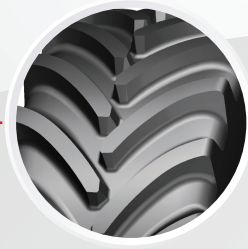
- Very High Flexion (VF) tractor radial range for modern farm tractors. Built to carry up to 40% more load than standard radials at same air pressure or same load at 40% lesser air pressure.
- Optimized tread design to handle high tractive forces in the field and high speeds in transport applications on the road. (Note: AR 4005 MaxFlex can be used on road with low VF air pressures)
- Clean inter-lug design that avoids soil trapping to enhance self-cleaning and improve traction in hard pull applications such as ploughing.
- Robust steel belted construction offers wider ground contact at low pressure, reducing soil compaction, preventing stubble penetration, and offering better traction.
- AR 4005 MaxFlex is engineered to offer longer life and durable performance.



SN	Size	Rim	SW	OD	SLR	RC	TreadDepth	LI
			(mm)	(mm)	(mm)	(mm)	(mm)	
1	VF 480/60R28	DW16L	470	1287	570	3807	46.0	149D/146E
2	VF 520/60R28	DW18L	520	1338	600	3938	47.0	149D/146E
3	VF 540/65R28	DW20B	549	1413	625	4138	48	154D/151E
4	VF 600/60R28	DW20B	587	1431	628	4182	51	157D/154E
5								160D/157E
6	VF 600/65R28	DW21B	660	1917	660	4381	58	163D/159E
7	VF 600/70R28	DW21B	620	1551	685	4567	56	173D/170E
8	VF 540/65R30	DW20B	549	1464	663	4331	48	161D/158E
9	VF 600/60R30	DW20B	587	1482	661	4380	51	162D/159E
10	VF 600/70R30	DW21B	620	1602	712	4700	56	170D/167E
11	VF 620/75R30	DW23B	636	1676	689	4659	58	172D/169E
12	VF 710/60R30	DW25B	710	1614	706	4698	58	171D/168E
13	VF 600/65R34	DW21B	597	1644	742	4834	51.0	169D/166E
14	VF 650/60R34	DW23B	660	1660	739	4872	58	168D/165E
15	VF 650/65R34	DW23B	653	1718	764	5086	58	170D/167E
16	VF 710/60R34	DW25B	710	1716	758	5100	58	173D/170E
17	VF 600/60R38	DW20B	587	1685	763	5008	51.0	168D/165E
18	VF 650/60R38	DW23B	668	1745	783	5170	58.0	173D/170E
19	VF 650/65R38	DW23B	660	1811	804	5321	58.0	172D/169E
20	VF 650/75R38*	DW23B	666	1940	840	5702	54	175D/172E
21	VF 650/85R38	DW23B	675	2063	900	6045	63	182D/179E
22	VF 710/60R38	DW25B	710	1820	807	5371	58	174D/171E
23	VF 710/70R38	DW25B	730	1959	860	5725	63	181D/178E
24	VF 620/70R42	DW23B	636	1935	865	5677	58	172D/169E
25	VF 650/65R42	DW23B	653	1917	860	5645	58	174D/171E
26	VF 710/60R42	DW25B	710	1919	855	5650	58	176D/173E
27	VF 520/85R42	DW18L	535	1953	880	5835	55	183D/180E
28	VF 580/85R42*	DW20B	580	2058	906	6114	56	183D/180E
29	VF 710/70R42	DW25B	730	2061	916	6115	63	185D/182E 188A8 CFO+
30	VF 710/75R42	DW25B	737	2153	943	6317	65	184D/181E
31	VF 800/70R42	DW28B	800	2187	953	6417	64.0	189D/185E
32	VF 900/60R42	DW30B	881	2150	944	6350	64	189D/185E 195A8 CFO
33	VF 750/70R44	DW25B	763	2179	958	6425	64	186D/183E

\*Coming soon

# FEATURES & BENEFITS



## VF Technology (Very High Flexion)

- 40% higher load carrying capacity with a standard air pressure compared to a standard tyre (Same load carrying capacity as a standard tyre with 40% lower air pressure)
- This helps reduce soil compaction, which is crucial in agricultural applications for maintaining soil health and crop yield



## Optimized Tread Pattern Geometry

- The tread pattern optimizes to provide better traction under high loads.
- It also ensures strong lateral grip, which is crucial for stability on side slopes



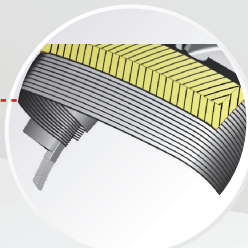
## Reduced noise level

The lug nose is designed to reduce noise level on road and contribute to the overall ride comfort



## Optimum Traction & Self-Cleaning

- The optimally designed tread pattern ensures maximum grip on various surfaces, especially in agricultural or off-road conditions.
- It helps eject mud, soil, and debris efficiently, preventing clogging and maintaining traction on all underfoot conditions



## Robust Construction

The steel belted construction enables the tyre to handle higher loads while also offering a wider footprint for better soil protection and long-lasting service life



## Better footprint area for excellent soil protection

The radial construction with MaxFlex technology, along with the optimized tread design maximize the footprint area. This is excellent for soil protection and traction on slopes. It also ensures excellent performance on wet surfaces by reducing slippage

# ABOUT TVS EUROGRIP

A foremost off-highway tyre manufacturer, part of TVS Mobility Group - one of India's largest auto ancillary conglomerates.

Have been manufacturing and exporting tyres to more than 85+ countries since the early 1990s.

Comprising a portfolio of over 1000+ products and expanding the range for markets worldwide.

Specializing in agriculture, construction, industrial and OTR segments.

World-class products with superior design and engineering.



85+  
COUNTRIES



LEADING  
TYRE BRAND



WORLD-CLASS  
PROCESSES



CUSTOM  
DEVELOPMENT

## WORLD-CLASS R&D PRACTICES

### SUSTAINABILITY & ENVIRONMENT PROTECTION



71% FROM  
RENEWABLE ENERGY



ZERO EFFLUENT  
DISCHARGE



Follow us on



tvseurogripohhtyres



export@eurogriptyres.com

SCAN FOR MORE

