

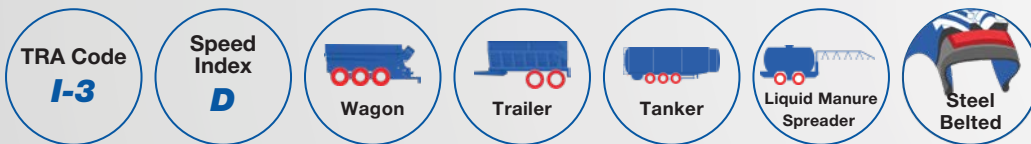
PREMIUM STEEL BELTED AGRI-TRANSPORT FLOTATION RADIAL



FL 927
FLOTATION RADIAL

FL 927

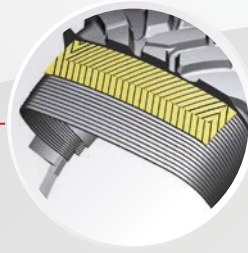
- FL 927 steel belted flotation radial is a directional block pattern tread designed for use predominantly in agriculture transport operation with a higher share of hard surface or road use. (Note: Is ideal for use on dry soil conditions too)
- The proven block design is further optimised by angular blocks to improve self-cleaning and avoiding any trapping between the blocks during on & off-road applications.
- The lug geometry of the blocks offers better ride comfort at the same time without compromising traction in the field.
- Robust carcass with steel belts offers durable performance in most demanding conditions.



SN	Size	Rim	SW	OD	SLR	RC	Tread Depth	LI
			(mm)	(mm)	(mm)	(mm)		
1	560/45R22.5	AG16	544	1076	479	3228	17.5	160D
2	560/60R22.5	AG16	565	1244	563	3785	17.5	170D
3	600/50R22.5	AG20	600	1172	540	3568	25	162D
4	620/75R26*	DW20B	620	1590	722	4857	27	176D
5	600/55R26.5	AG20	611	1333	603	4023	23	165D
6	650/55R26.5	AG20	650	1389	629	4221	26	178D
7	710/50R26.5	AG24	726	1383	622	4200	23	170D
8	600/60R30.5	AG20	611	1495	684	4510	25	169D
9								173D
10	650/65R30.5	AG20	650	1621	732	4944	26	176D
11								181D
12	750/60R30.5	AG24	754	1675	747	5124	25	181D
13	850/50R30.5	AG28	862	1630	721	4916	26	182D
14	800/60R32	DW27B	818	1800	805	5410	31	185D

*Coming soon

FEATURES & BENEFITS



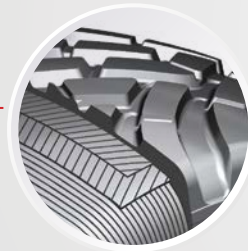
Construction

The steel-belted radial design ensures a robust and stable tyre structure, delivering exceptional durability and high load-carrying capacity



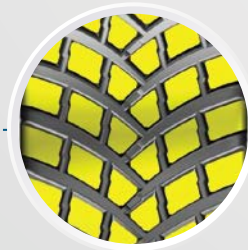
Optimized Pattern Design

- The tread is designed with a specific orientation that enhances self-cleaning capability and improved traction
- Continuous center area provides superior stability and consistent road contact delivering better handling and improved roadability



High Wear resistance

The specially formulated tread compound for flotation tyre ensures exceptional wear resistance while delivering superior traction on road



Directional pattern

- The continuous center area along with grooved directional lugs enhances roadability and traction, making the FL 927 ideal for transport applications
- Provides superior self-cleaning capability for consistent performance



Robust Design

- Rounded shoulders provide better resistance to irregular wear, minimize scrub and enhanced maneuverability
- Excellent puncture resistance and ensures optimized load distribution for reliable performance



Superior Footprint & Low soil compaction

A steel belted radial construction ensures optimal footprint distribution and enhanced puncture protection, reducing soil compaction while providing excellent stability both on and off the road

ABOUT TVS EUROGRIP

A foremost off-highway tyre manufacturer, part of TVS Mobility Group - one of India's largest auto ancillary conglomerates.

Have been manufacturing and exporting tyres to more than 85+ countries since the early 1990s.

Comprising a portfolio of over 1000+ products and expanding the range for markets worldwide.

Specializing in agriculture, construction, industrial and OTR segments.

World-class products with superior design and engineering.



85+
COUNTRIES



LEADING
TYRE BRAND



WORLD-CLASS
PROCESSES



CUSTOM
DEVELOPMENT

WORLD-CLASS R&D PRACTICES

SUSTAINABILITY & ENVIRONMENT PROTECTION



71% FROM
RENEWABLE ENERGY



ZERO EFFLUENT
DISCHARGE



Follow us on



tvseurogripohTTYRES



export@eurogriptyres.com

SCAN FOR MORE

