

**TVS**  
**EUROGRIP**  
OFF HIGHWAY TYRES

**BUILT FOR STRENGTH,  
STABILITY &  
PERFORMANCE**



**TAUROTRAC TLB 504  
TELEHANDLER RADIAL  
(STEEL BELTED)**

# Taurotrac TLB 504



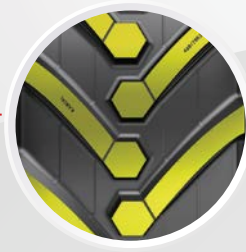
- Taurotrac TLB 504 R-4 is a steel belted agro-industrial tyre designed for telehandlers, compact wheel loader and backhoe loaders engaged in agriculture and agro-allied applications.
- The unique stabilizing 'Hex-Block', technology, provides stable footprint on all surfaces. It enhances better rolling and better wear on hard surfaces too.
- The terraced lug design maximises footprint on hard surfaces whilst maximizing traction on soft terrain throughout its wear cycle.
- Specially engineered lug angle maximises torque transfer, reducing slippage.



SN	Size	Rim	SW	OD	SLR	RC	Tread Depth	LI
			(mm)	(mm)	(mm)	(mm)	(mm)	
1	300/75R18*	W9	295	908	412	2726	34	142A8/B
2	340/80R18	W11	329	1460	667	4303	41	143A8/B
3	380/75R20*	DW15L	384	1078	485	3121	36	148A8/B
4	400/70R20*	W13	412	1072	487	3239	37	149A8/B
5	405/70R24*	13	405	1170	538	3521	37	152A8/B
6	500/70R24*	DW15L	505	1308	583	3983	40	164A8/B
7	440/80R24	DW14L	441	1314	590	3970	37	161A8/B
8	460/70R24	DW15L	465	1254	575	3765	35	159A8/B
9	480/80R26*	DW15L	495	1423	634	4248	36	167A8/B
10	440/80R28*	DW14L	459	1415	644	4247	40	156A8/B

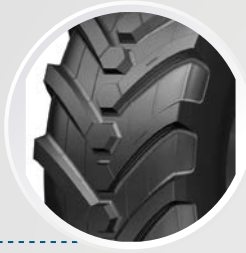
\*Coming soon

# FEATURES & BENEFITS



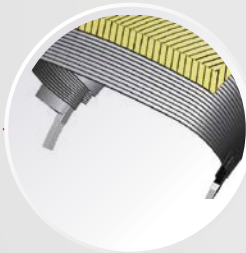
## Unique Tread Pattern

The unique stabilizing 'Hex-Block' lug design is specially engineered for both on and off-road application, which makes the TLB 504 a versatile tyre that can be used on multiple surfaces. The tread pattern design is optimized in such a way that it gives excellent traction on wet and rough condition



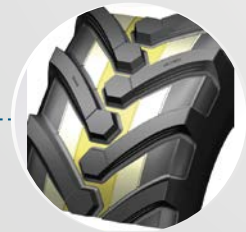
## Cut and Chip Resistance

The tread compound is optimized to resist cutting and chipping of the lugs. This enhances the tyre's overall life



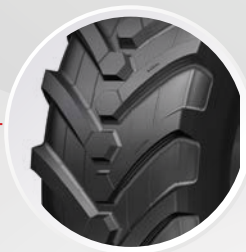
## Steel Crown Belts

The steel belted construction provides excellent stability, puncture resistance, and wider footprint. This results in the tyre that has dependable performance in all terrains. Wider footprint also reduces the rate of wear of the lugs adding to the life of the tyre



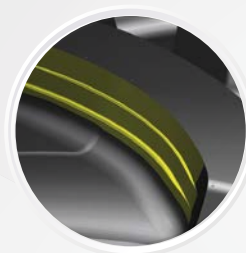
## Dual Tie Bar

The dual tie bars prevent the lugs from shuffling and work as mud breakers which helps in improving the self-cleaning abilities of the tyre. This enables the tyre to have good on-road properties and have superior traction in the field



## Robust Construction

The reinforced sidewall of the tyre provides excellent lateral stability and a comfortable ride. The strong construction of the tyre makes it ideal for machines such as telehandlers and compact wheel loaders which are engaged in heavy loading and lifting operations



## Step Lugs

The dual step lugs are designed in such a way that it helps in self-cleaning and improve the lug's structure and robustness. This again contributes to providing stability on hard surfaces and traction in soft underfoot conditions

# ABOUT TVS EUROGRIP

A foremost off-highway tyre manufacturer, part of TVS Mobility Group - one of India's largest auto ancillary conglomerates.

Have been manufacturing and exporting tyres to more than 85+ countries since the early 1990s.

Comprising a portfolio of over 1000+ products and expanding the range for markets worldwide.

Specializing in agriculture, construction, industrial and OTR segments.

World-class products with superior design and engineering.



85+  
COUNTRIES



LEADING  
TYRE BRAND



WORLD-CLASS  
PROCESSES



CUSTOM  
DEVELOPMENT

## WORLD-CLASS R&D PRACTICES

### SUSTAINABILITY & ENVIRONMENT PROTECTION



71% FROM  
RENEWABLE ENERGY



ZERO EFFLUENT  
DISCHARGE



Follow us on



tvseurogripohTTYRES



export@eurogriptyres.com

SCAN FOR MORE

