

TVS
EUROGRIP
OFF HIGHWAY TYRES

**DESIGNED FOR
TRACTION &
STABILITY IN
AGRO-INDUSTRIAL
APPLICATIONS**



TLB 522
STEEL BELTED RADIAL

TAUROTRAC TLB 522

- The Taurotrac TLB 522 is a R-1 IND steel belted radial tyre for Agricultural and Industrial application is designed for use on both wet and hard surfaces.
- The center lug design specially designed for both on and off-road applications.
- The steel belted construction provides excellent stability, puncture resistance and wider footprint, which reduces rate of wear for a longer lasting service.
- It's robust construction is suitable for machines like telehandler and compact wheel loaders for heavy loading and lifting operation in agriculture and agro-allied services.



SN	Size	Rim	SW	OD	SLR	RC	Tread Depth	LI
			(mm)	(mm)	(mm)	(mm)	(mm)	
1	425/55R17	13	421	900	410	2705	31	142A8/B
2	460/70R24*	DW15L	445	1250	564	3682	35	150A8/B

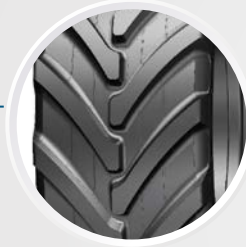
*Coming soon

FEATURES & BENEFITS



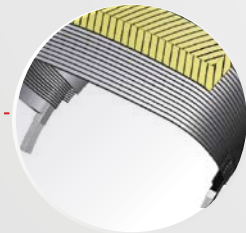
Tread Pattern Optimization

- The center lug design specially designed for both on and off-road application which makes the TLB 522 a multipurpose tyre
- Provides excellent traction on soft soil, mud and uneven terrain
- Better self-cleaning which reduced mud build up on tyre during operation
- Better stability & improve ride comfort



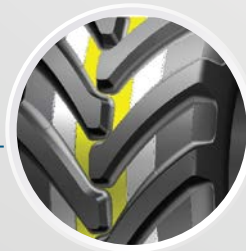
Optimized Tread Compound

- Ensures durability and long service life
- Provides resistance to wear and tear under high torque conditions



Steel Crown Belts

The steel belted construction for excellent stability, puncture resistance and wider footprint for long lasting service



Dual Tie Bar

Dual tie bar prevents lug shuffling and works as mud breakers which also helps in self cleaning



Robust Construction

- Reinforced sidewall offers high resistance to cuts, abrasions, and impacts
- Suitable for heavy loads and harsh working conditions

ABOUT TVS EUROGRIP

A foremost off-highway tyre manufacturer, part of TVS Mobility Group - one of India's largest auto ancillary conglomerates.

Have been manufacturing and exporting tyres to more than 85+ countries since the early 1990s.

Comprising a portfolio of over 1000+ products and expanding the range for markets worldwide.

Specializing in agriculture, construction, industrial and OTR segments.

World-class products with superior design and engineering.



85+
COUNTRIES



LEADING
TYRE BRAND



WORLD-CLASS
PROCESSES



CUSTOM
DEVELOPMENT

WORLD-CLASS R&D PRACTICES

SUSTAINABILITY & ENVIRONMENT PROTECTION



71% FROM
RENEWABLE ENERGY



ZERO EFFLUENT
DISCHARGE



Follow us on



tvseurogripohTTYRES



export@eurogriptyres.com

SCAN FOR MORE

